

## Avision AV50F Portable Sheetfed Scanner



AV50F with ADF

## The ideal solution for mobile professional



AV50F scan module

- One button functionality allows you to assign up to six scanning applications and perform at the touch of a button
- Scan up to 30 images per minute in duplex mode (wall-powered mode)
- Compact ADF scanner holds up to 20 pages (wall-powered mode)
- Supports USB powered operation
- Detachable scan module

### The ideal solution for mobile professional

The Avision AV50F is the perfect companion for the office, on the road, or at home. Measuring only 2.3" x 3.1" x 11.7" and weighing a mere 1 kg, the Avision AV50F scan module is slim and lightweight. It fits neatly on a desk and packs easily alongside your laptop or in a briefcase for travel. Imagine you can now scan all of your documents, receipts, business card, and photos and no matter where you are.

With an addition of a 20-page auto document feeder, the AV50F is able to scan document continuously without interruption on the dock.

### What we have bundled

The Avision AV50F scanner comes with TWAIN and ISIS drivers and is also bundled with full version of exclusive Avision Button Manager, ScanSoft PaperPort, Avision ScanPortfolio, WorldCard.



Avision's Button Manager

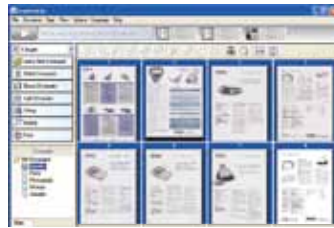
### Avision's Button Manager Completes your scan in a single step

Avision's state-of-the-art software application, the Button Manager, enables you to complete complex scanning task in just a single step. When the button is pressed, the scanner automatically scan your documents and convert them to a highly compressed file format, Adobe searchable PDF, or other image format and then send the file to a designated folder, or other destination applications such as e-mail, printer, or your favorable software application. The original step-by-step procedure is replaced with only a single touch of the button.

**Avision's**  
Button Manager scans  
directly to Adobe® certified  
searchable PDF!



# Avision AV50F Sheetfed Dockable Scanner



Avision's ScanProfolio UI



## WorldCard- Color Business Card Scanner & Recognition System

## ScanSoft Paperport - The Professional Choice to Organize and Share Your Documents

PaperPort is the easiest way to turn piles of paper and photos into organized files that you can quickly find, use and share. Stop wasting time searching for paper documents. End the frustration of organizing, editing and sharing your digital photographs. PaperPort makes it simple to connect your scanner and computer together to work with PDF and JPEG images just like working with paper documents right on your desktop. It is the perfect solution for your home or small office.

## Avision's ScanProfolio- Scanning & Imaging Solution

### User-Friendly scanning interface

ScanProfolio provides 1/2/4/8 pages views to display scanned pages. Users can easily look into scanned document by ScanProfolio.

### Fast deskew, auto crop your document

Automatically straighten image and eliminate borders around image due to different paper size.

### Blank page separation

Automatically separates documents by a blank page.

### Drag and drop data

Directly from the scanned image or text in your email or documents.

### Link to map and directions

Directly from business card contact.

### Data exchange

Export/Import/Sync contacts to /from with outlook, Lotus Notes, Palm, Pocket PC, ACT! Goldmine, Salesforce, Windows Mobile devices and smart phones.

### Save database to flash drive

Allow you to save contact database on a flash drive and access the contact info on the flash drive even on the PC without WorldCard software.

## Avision AV50F Product Specifications

Throughput Speed: (at color 200 dpi, A4 size)	Scan Module: 4.7 sec. ADF Mode: 15 PPM / 30 IPM
Scanning Type:	Scan Module: Single Sheetfed, Duplex ADF Mode: Multiple Sheetfed, Duplex
Scanning Technology:	Contact Image Sensor ( CIS )
Scanning Mode:	B&W/Halftone/Error Diffusion/8-bit gray/ 24-bit color
Recommended Daily Volume:	Up to 1,000 pages per day
Optical Resolution:	600 dpi
Output Resolutions:	75, 100, 150, 200, 300, 400, and 600 dpi
Maximum Document Size:	216 mm x 355.6 mm (8.5 in. x 14 in.)
Minimum Document Size:	63 mm x 50 mm (2.5 in. x 2.0 in.)
Paper Thickness and Weight:	16 - 28 lb. paper
ADF Capacity:	Up to 20 sheets of 20 lb. paper
Connectivity:	USB 2.0 (cable included only)
Interface Support:	TWAIN and ISIS drivers
File Compression:	TIFF G4, JPEG
File Format Outputs:	PDF, Multi-page TIFF and JPEG, GIF, BMP
Warranty:	One-year
Electrical Requirements:	Input: 100-240 VAC, 50/60 Hz Output: 24V, 1.0A
Power Consumption:	<10 W

Dimensions:	Scan Module	60 mm x 297 mm x 80 mm 2.3 in x 11.7 in x 3.1 in
	With ADF	158 mm x 297 mm x 235 mm 6.2 in x 11.6 in x 9.2 in
Weight:	Scan Module	1.0 Kg (2.2 lbs)
	With ADF	1.7 Kg (3.7 lbs)

## Minimum System Requirements

- Pentium 4 or higher
- Windows®XP/2000/Vista
- 128MB RAM (256MB RAM for Windows XP)
- CD-ROM drive
- USB port

## Contents

- Scanner
- Power Supply
- USB 2.0 Cable
- USB Cable for Power
- CD-ROM including:
  - Scanner Driver (TWAIN/ISIS Driver)
  - Avision Button Manager
  - ScanSoft PaperPort
  - Avision ScanProfolio
  - WorldCard



The Avison scanners come with TWAIN and ISIS-compatible drivers.  
Avison Button Manager scans your documents directly to Adobe certified searchable PDF file!  
The registered brand names and product names mentioned in this document belong to each respective holder.  
Energy Star name and marks, registered marks owned by the U.S. government  
The information contained in this document(s) is subject to change without notice.

www.avision-africa.com  
0861 313 300



imagine... a paperfree world